

NEWSNOTE

VOLUME 1, ISSUE 5   OCTOBER 9, 2024

FROM THE PRINCIPAL’S DESK...

Dear St. Mary’s Elementary Families,

As a diocese, we are certainly amidst a season of change. Change can create uncertainty; it pushes us outside of our comfort zones. Though change is unavoidable, it can also be scary. However, some say that allowing fear to stop you from growing and evolving is scarier than change itself. And, in fact, impermanence is the only thing we can truly rely on.

My fellow Catholic school principals and I have been tasked with working together to craft a strategic plan for the future of our schools. In SME’s plan, I was proud to include many details about new happenings at our school. When presenting my plan, I will speak of our Pillar System, explaining why we have organized our school in this manner and the benefits we hope to continue to see from these efforts. I will boast of our students’ academic successes and our extracurricular offerings - Rosary Club and Garden Club are just two of our recent new additions. I will explain how we have evolved our STREAM academies into our EXCEL @ SME Program. I will communicate why we have reorganized our intermediate grades to meet the needs of our growing and changing enrollment.

So much has changed.

But we have so much to look forward to.

It would be naive for anyone to look at the future and be without uncertainty. And sometimes change is scary. Sometimes for good and valid reasons. However, we at SME will never stop growing, evolving, or improving. We look to the future with optimism and hope because of all of the wonderful improvements we have seen over the past few years. Because of the Pillar System, our students are growing closer together, cheering for each other’s successes, and enjoying the tangible camaraderie in our building. We’re shaping lifelong learners through our EXCEL Program, forming students who recognize that education is not just memorizing facts scribbled on flashcards. Above all else, every single member of our community is banding together to help our students become the best people they can be.

Let’s embrace change and all it has to offer, as we work together to write the next chapters of St. Mary’s Elementary School.

With Optimism,  
Mr. O



UPCOMING EVENTS:

- **Fri. 10/11 - NO SCHOOL**, Staff PD
- **Mon 10/14 - NO SCHOOL**, Indige-nous People Day
- **Thurs. 10/17** - School Picture Day
- **Fri. 10/18** - School Picture Day
- **Fri. 10/18** - HSA: My Little Sweetheart Dance 6-8
- **Fri. 10/25** - HSA: Trunk-or Treat 6-8pm
- **Fri. 11/1** - All Saints Day Mass, 8:30
- **Wed. 11/6** - Pre-K Town Hall Meeting 5:30pm
- **Fri. 11/8** - Veterans Day Prayer Service 8:30am
- **Fri. 11/8 - 10:45am** **Early Dismissal:** P/T Conference Day

BY THE NUMBERS

In this section we will talk about the numbers of our fundraisers; the good, the bad and the most up to date as possible!

We offer a wide variety of opportuni-ties to support SME and will be chang-ing things up this year with our offer-ings.

We understand that every fundraiser will not be for everyone, but we do appreciate any & all support you can give!

Year round ways to help:

- ◇ Boxtops 4 Education  
*July Donation \$6.80*  
*August Donation \$47.10*  
*September Donation \$15.50*
- ◇ RaiseRight
- ◇ Tops in Education Program

CATALOG FUNDRAISER

St Mary's Elementary School's fundraiser starts today, and we need your help!

Our goal is to raise \$10,000.00 to reduce the cost of HSA sponsored activities and events.

Register TONIGHT at [www.ShopFund.com](http://www.ShopFund.com)

See attached flyer for more details!

MY LITTLE SWEETHEART DANCE

HSA is looking for Volunteers for the My Little Sweetheart Dance on October 16th. If you are able to help please sign up below.

<https://www.signupgenius.com/go/10C0D4BA9A822A1FDC25-52091806-mylittle>

If you are not able to help during the event...

we are also looking for **CANDY DONATIONS**, for the activities we have planned.

Please use the QR code to sign up!



FALL PICTURE DAY

Mark your calendars and make those hair cut appointments! Picture days are scheduled for:

**Thursday 10/17 & Friday 10/18.**

We will share the schedule of classes per day and have paper order forms available soon, so be on the lookout for that information.

Online ordering: Our online Order Code is 88250CF

[Order Here](#)



DAILY WALKER/PARENT PICK UP DISMISSAL

Our afternoon dismissal is running smoothly - thank you to all for making that happen!

A reminder for those who may be new to picking your child up as a walker/ parent pick up:

For the safety of our students we **will** ask for identification from any person picking up a student until the time that our dismissal team is familiar with them. We appreciate your cooperation with this and ask that you share this information along with anyone else who you may have picking them up.

INSIDE THIS ISSUE:

PRINCIPAL	1
SWEETHEART	1
NUMBERS	1
DISMISSAL	1
PICTURES	1
FUNDRAISER	1
ASC CALENDAR	2
HSA	2
RAISERIGHT	2
NURSENOTES	2
7TH & 8TH	2
IN THE KNOW	2



ST. MARY'S  
ELEMENTARY SCHOOL

2 St. Mary's Hill  
Lancaster, NY 14086

Phone: 716-683-2112  
Fax: 716-683-2134  
www.smeschool.com



UPON THIS HILL,  
WE DO GOD'S WILL



RAISERIGHT

Tuesday 9-12  
Wednesday 12-3  
Friday 9:30-12

We have updated our order form to include cards we carry in stock and removed others. If there is something you want, but don't see it, please contact me! If available, I can order them for you! Or you can go online to find a master order form there. I will also be in office on Monday completing paperwork and ordering so you can also reach me on that day as well. I am sorry to say **Tim Horton** cards are **still unavailable** for ordering.

If there is anything I can do for you, please email me at [raiserright@smeschool.com](mailto:raiserright@smeschool.com) or call me at (716) 683-2112 ext. 132. I will answer emails within 24 hours and voice messages on my next day in.

Cindy Olejniczak  
RaiseRight Coordinator



AFTERSCHOOL CARE SCHEDULE



On Monday, December 2nd there will be **NO** Afterschool Care available as our staff will have a meeting immediately afterschool. Thank you for your understanding.

VOLUNTEERS/STAFF WELCOME

Are you a parent / grandparent with a few hours to spare during the lunch hour or after school program hours?

We are looking to add volunteers to our lunch monitor crew and additional afterschool care staff. If you are interested please let us know!

[\(secretary@smeschool.com\)](mailto:secretary@smeschool.com)

HOME SCHOOL ASSOCIATION

My Little Sweetheart Dance

On Friday 10/18 we invite all the little ladies and a special guy in their life to our My Little Sweetheart Dance. The fun begins at 6pm! Tickets are presale only (\$14 per person) and includes pizza & refreshments. Scan the QR code to purchase your tickets by 10/14.



If you would like to volunteer to help out at the dance, or if you would be willing to donate candy, please sign up using the following QR code.



Gnome for the Holiday

We are excited and getting ready for your fall fundraiser! Gnome for the Holiday catalog attached in the NewsNotes is the parent letter for the fundraiser. It starts 10/10 and goes until 10/24.

Fall Craft Show

Save the date for the SME Fall Craft Show, to be held on Saturday 11/9! If you, or someone you know, would like to be a vendor, please reach out to [craftshow@smeschool.com](mailto:craftshow@smeschool.com) for more information.

Trunk - or - Treat

Join us for our annual Trunk-or-treat on Friday 10/25 from 6-8pm. There will be pizza, cider, donuts, & activities in the PC — and plenty of treats handed out in the parking lot! This is a free event for the school community, we only ask that each family bring a non-perishable item to donate. Click the link below to let us know how many people will be attending, sign up to pass out candy, or volunteer:  
[St. Mary's Elementary School: Trunk or Treat \(signupgenius.com\)](http://St.Mary'sElementarySchool.TrunkorTreat(signupgenius.com))

SME Spirit Wear

Show your SME pride with SME Parent t-shirts. Each T-shirt is \$10. Adult sizes small through 2XL available. Sizes are limited to available inventory. Use the link or scan the QR code to order. Payment may be made via credit, cash or check payable to St. Mary's HSA. <https://sme-parent-wear.cheddarup.com>

SME Spirit Wear

HSA will host a monthly spirit wear dress down day. Each t-shirt is \$15. Sizes youth small through adult 2XL available. If the size you're looking for is sold out, please join the waitlist. You will be notified when waitlist sizes will be available by the end of September. Use the link or scan the QR code to order. Payment may be made via credit, cash or check payable to St. Mary's HSA.



NURSE NOTES

Covid guidelines are ever changing and we have provided the latest update (dated March 2024). If/when we receive any new information we will pass it along.

~ Nurse Dara Sirianni RN, BSN  
[nurse@smeschool.com](mailto:nurse@smeschool.com)  
716-683-2112 x128

7TH & 8TH GRADE INFO

8th Graders: If your child plans on attending a catholic high school next year you will need to complete the online application:  
[https://catholicshwny.smapply.io/prog/application\\_for\\_admission\\_grade\\_9/](https://catholicshwny.smapply.io/prog/application_for_admission_grade_9/)

Please be sure to print and sign the confirmation email you receive upon completion and submit to the main office. Without this signed document, we are unable to submit a copy of your child's 1st report card to their 1st & 2nd choice catholic high schools.

7th & 8th Graders: We will share information & flyers from area high schools as we receive them so be sure to scroll through our electronic version each week.



STAY IN THE KNOW

**Save the Date:** 11/9 HSA Craft & Vendor Fair

**Make Note:** 11/11 No School - Veterans Day

**Save the Date:** 11/15 Christian Witness & Grandparents Mass, 8:30am

**Save the Date:** 11/27-29 Thanksgiving Recess

**Make Note:** Fall Picture Retake Day

**Save the Date:** 12/5 HSA Merry Moose Shop

# St Mary's Elementary School - HSA Fundraiser

ORDERS DUE BY:

**10/24/2024**

REGISTER,  
SHARE, &  
SHOP @

**SHOPFUND.COM**



With your help, we will be raising money to reduce the cost of HSA sponsored activities and events. We are asking every family to REGISTER & SHARE with **5 or more supporters** to reach our group goal! We are counting on these funds for the benefit of every child. This funding does not come from other sources.

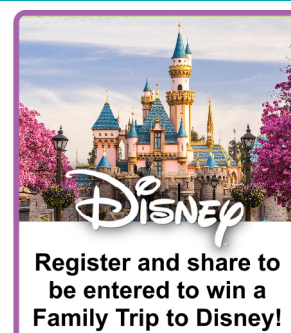
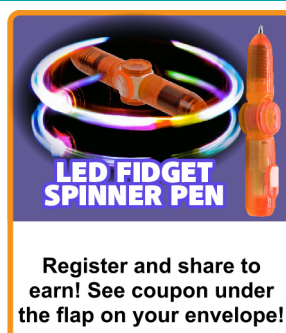
**Your participation, at any level WILL make a difference.** Thank you for your support!

Make sure to Register and Share to win PRIZES and enter to **WIN A FAMILY TRIP TO DISNEY!**

## HOW TO PARTICIPATE

1. REGISTER today at [ShopFund.com](https://ShopFund.com).
2. SHARE with 5 or more supporters with the online tools.
3. WIN from over \$100,000 in prize giveaways.
4. Make checks payable to: St Mary's Elementary School - Write students name in the memo portion of every check.
5. Do NOT write online orders on your order form.
6. Orders shipped to the school will be available for pick up the week of 12/2. Exact day TBD.

*800+ items available online PLUS take your order form to work, practice & other places to raise more!*



Questions? Contact Jayne O'Grady at [ogradyj@smeschool.com](mailto:ogradyj@smeschool.com)



FAMILY & FRIENDS CAN SUPPORT NATIONWIDE AT **ShopFund.com**

PLUS, REGISTER TO GAIN ACCESS TO THESE FUNDRAISER FEATURES:



**Register**

AND SHARE TO WIN FROM  
\$100,000 IN PRIZES



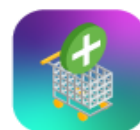
**Track Progress**

TRACK SUPPORTERS &  
LEADERBOARD STANDING



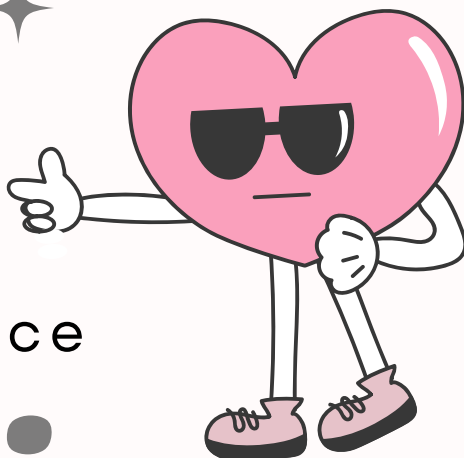
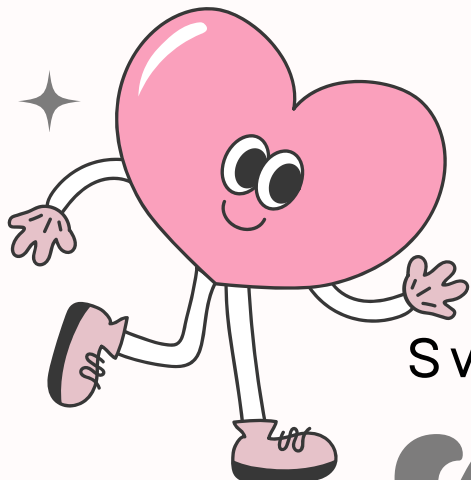
**Share**

YOUR FUNDRAISER WITH  
FAMILY & FRIENDS NATIONWIDE



**Shop**

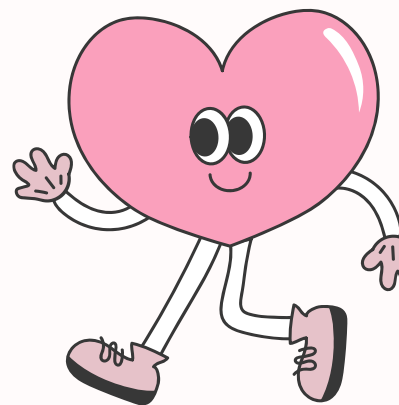
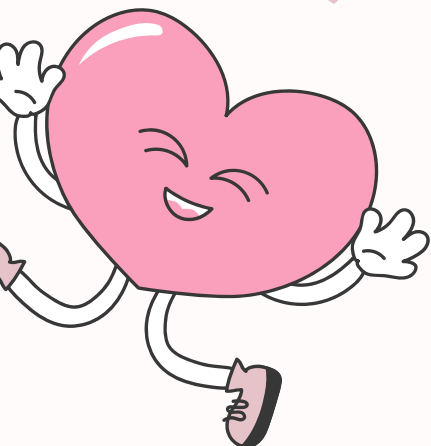
FROM 800+ ITEMS AND  
PAY ONLINE



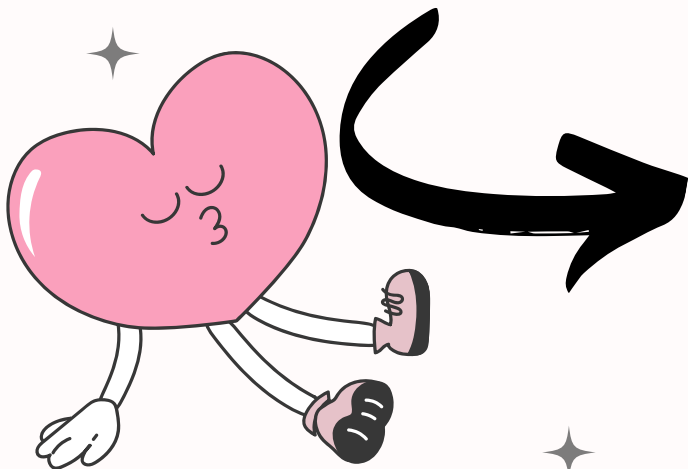
My Little  
Sweetheart Dance

# Love is Sweet

We are looking for  
Volunteers to help  
at the event, as  
well as **candy**  
**donations!!**



*Please see  
details in  
the signup!*





Please join us for our

# Halloween Trunk or Treat



DECORATE YOUR TRUNKS AND COME  
FOR TREATS

October 25, 2024

6:00-8:00pm

Pizza, drinks and activities in the Parish  
Center

Admission: 1 non-perishable food item



YOU ARE INVITED TO

LANCER

# CABARET NIGHT

*Poetry through Music*

THURSDAY | 17 OCT 2024 | 7:00PM

ST. MARY'S HIGH SCHOOL  
GUS GALASSO AUDITORIUM

FEATURED PERFORMANCES BY:

SMALL ENSEMBLES  
ST. MARY'S MIXED CHORUS  
FEATURED SOLOISTS

PRESENTATION OF:

THE MEREDITH LATOUR PERFORMING ARTS AWARD

\$3 ADMISSION WITH  
ONLINE TICKET PURCHASE

\$5 ADMISSION AT THE DOOR



girl scouts

of western new york



Making

New Friends!

Matters

Most.



Be part of a *crew* that *celebrates* you just the way you are.

Girl Scout Registration Night  
Lancaster Youth Bureau, 200 Oxford Ave, Lancaster  
Wednesday, October 16<sup>th</sup>, 6:00-7:00 PM



RSVP is kindly requested. RSVP for our IN-PERSON event using above QR code. At these free events, you & your girl are invited to learn more about our program, find troop options and register. Don't forget to invite your friends!



If you aren't able to attend our in-person event, scan here to RSVP to one of our virtual open houses that are held via Zoom

Join Girl Scouts *Today!*

[www.gswny.org](http://www.gswny.org)



ST. MARY'S ELEMENTARY

# *Red Ribbon Week*

*(October 21st - October 25th)*



**YOU ONLY LIVE ONCE / BE DRUG & BULLY FREE!**

---

**10/21- DRESS IN RED**  
**KICK OFF RED RIBBON WEEK**

**10/22 - DRESS LIKE A MOVIE STAR/ROCK STAR**  
**SHOW YOU'RE "TOO COOL" FOR DRUGS THAT YOU**  
**HAVE TO WEAR SHADES**

**10/23 - WEAR YOUR CLOTHES BACKWARD**  
**TURN YOUR BACK TO BULLYING AND DRUGS**

**10/24 - DRESS IN ORANGE FROM HEAD TO TOE**  
**PROMOTING ANTI-BULLYING \*OR\***  
**SHOW YOU'RE SUPPORT THAT WE'RE A BULLY FREE ZONE**

**10/25 - WEAR YOUR SME ATTIRE**  
**SHOW YOU'RE PART OF THE TEAM @ SME**

**NON-RIPPED JEANS CAN BE WORN**



# Let's Stir The "Pot"

## A Conversation About the Effects of Marijuana on Our Youth

**This Program is Recommended for Parents and  
Their Children who are in 4<sup>th</sup>, 5<sup>th</sup>, and 6<sup>th</sup> Grade.**

**This evening has been put together for those who are concerned about the  
legalization and increased usage of marijuana among our youth.**

**Parents will learn the facts, trends, types of cannabis, symptoms and signs of usage.  
Students will have the opportunity to break into their own presentation focusing on risky  
decisions, dealing with peer pressure, and the health risks of using substances.**

**Thursday, October 10<sup>th</sup>**

**6:00pm - 8:00pm**

**Lancaster Youth Bureau**

**200 Oxford Avenue, Lancaster, NY 14086**

**This program is provided by Horizon Health Services in conjunction with  
the Lancaster Family Support Center and the Town of Lancaster Youth Bureau.**

**Space is Limited**

**Call the Lancaster Youth Bureau to Register  
at 716-683-4444**

